

See proposed layout of our consumer unit below. Can you also confirm design of panel board switching and additional distribution board.

- LP/1/1.1 Office & Store Lights
- LP/1/1.2 M, F & Dis Toilet Lights
- LP/1/1.3 Canteen and corridor lights
- LP/2/1.1 13A sockets offices & store
- LP/2/1.2 13A sockets canteen & corridor
- LP/2/1.3 13A sockets kitchen
- LP/3/1.1 DDA alarm
- LP/3/1.2 Heaters office & store
- LP/3/1.3 Heaters toilets
- LP/4/1.1 Heaters canteen and corridor
- LP/4/1.2 External Lights
- LP/4/1.3 Unswitched fused connection
- LP/5/1.1 32A 230v Socket
- LP/5/1.2 Immersion heater
- LP/5/1.3 Immersion heater
- LP/6/1.1 Immersion heater
- LP/6/1.2 Fire Alarm
- LP/6/1.3 Intruder Alarm
- LP/7/1.1 Water boiler
- LP/7/1.2 32A 230v Socket
- LP/7/1.3 DDA hand dryer
- LP/8/1.1 HandDryer Female Toilet
- LP/8/1.2 Hand dryers male toilet
- LP/8/1.3 Spare way
- LP/9/1.1 Spare way
- LP/9/1.2 Spare way
- LP/9/1.3 Spare way

- External Lighting Timerclock with Timed Manual Override Switch Adjustment
- Unswitched Fused Connection Unit
- Switched Fused Connection Unit
- 45A DP Cooker Switch
- Twin Socket Outlet
- 32A 230v Socket
- Key Switch
- PIR 230v/1ph/50hz Must not be Earthed - Vent Axia Visionex c/w Adjustable Run On Timer
- Light Switch
- Pull Switch
- PIR Presence Sensor
- External Lighting Photocell
- 2x 49w T5 IP 65 Luminaire High Frequency
- 1 x 8w Non-Maintained 3Hr Emergency Luminaire c/w EXIT Legend and down arrow
- 1 x 8w Non-Maintained 3Hr IP65 External Bulkhead
- 1 x 38w 2D Eyelid IP65 Luminaire on plan
- 1 x 38w 2D Eyelid IP65 Luminaire
- 1 x 38w 2D Luminaire
- 1 x 28w 2D Luminaire

- Heatrae Sadia Supreme 220SS 101 Water Boiler c/w Switched Fused Connection Unit
- Dimplex 3kW Convector Heater c/w Switched Fused Connection Unit
- Dimplex 2kW Downflow Heater c/w Switched Fused Connection Unit
- Extractor Fan Vent Axia TX6PL c/w Fan Isolator Ceiling Mounted vented to roof cowl
- Warner Howard Automatic Hand Dryer - Heavy Duty Cast Steel 2.3kW c/w Switched Fused Connection Unit
- 125A Type B Distribution Board
- 250A Panelboard
- Heatrae Sadia Megaflow Eco 210tr DDD Water Heater
- 180w Tube Heater with Switched Fused Connection and Roomstat
- Pull cord for alarm and re-set panel in DDA WC

- 100x50 2 Compartment Trunking for Power/Lighting & Fire/DATA - at High Level
- MEC3 Dado Trunking for Power & DATA at Mid Level

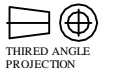
Wiring in walls to be surface mounted except in toilets and kitchen area. Wiring in ceiling to be concealed.

Thermostatic Mixer Shower

PROVISION FOR A SANISHOW UNIT TO PUMP WATER AWAY FROM SHOWER TRAY (SWITCHED WITH LIGHT?) DESIGN TO BE AGREED BETWEEN PUMBER AND ELECTRICIANS

DO NOT SCALE

REMOVE ALL BURRS AND SHARP EDGES



**CLEVELAND SITESAFE LIMITED**

RIVERSIDE WORKS  
DOCKSIDE ROAD  
CLEVELAND  
TS3 8AT  
01642 244663

CUSTOMER

DESCRIPTION  
APEX MODULAR  
CONSTRUCTION DEPOT  
BUILDING - SIZES & LAYOUT

DRG No NM 0146-06-1

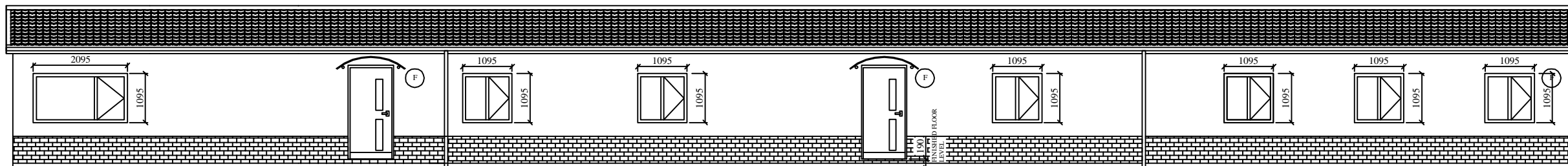
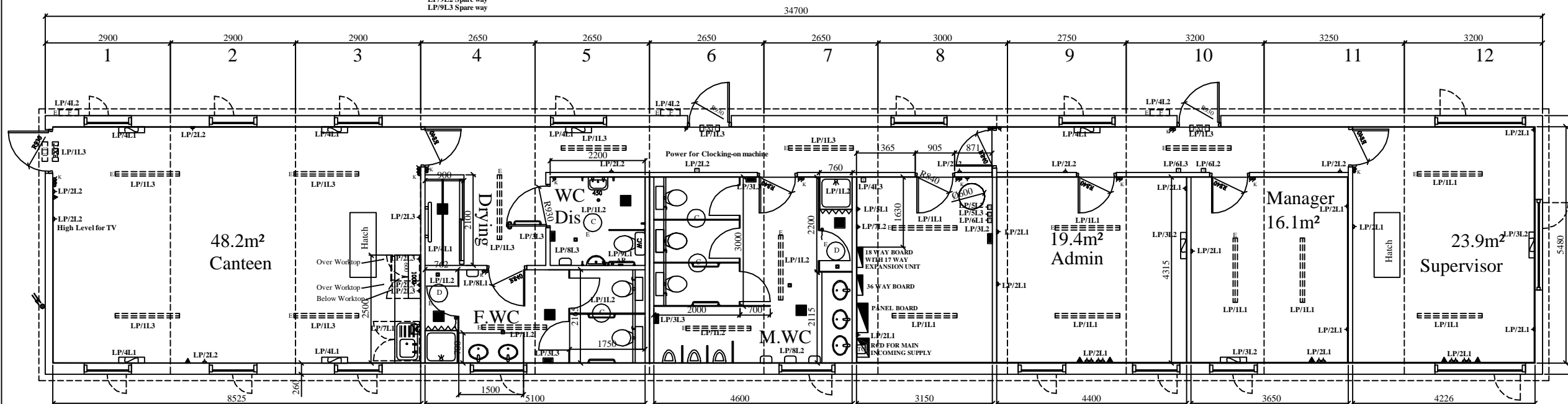
DRAWN  
JWH

SCALE

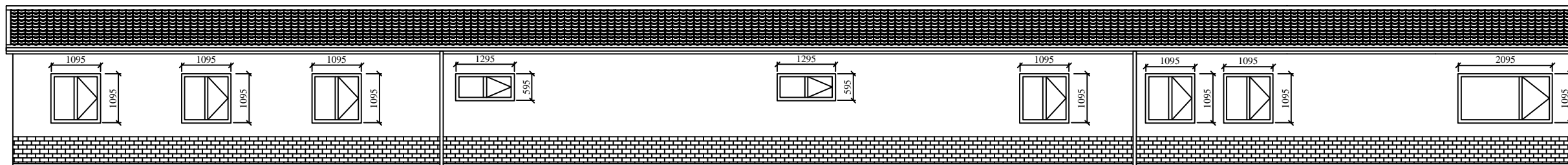
DATE  
13/03/2014

REV No	DATE	BY
REV 1		
REV 2		
REV 3		
REV 4		

NOTES:



FRONT ELEVATION



REAR ELEVATION

